

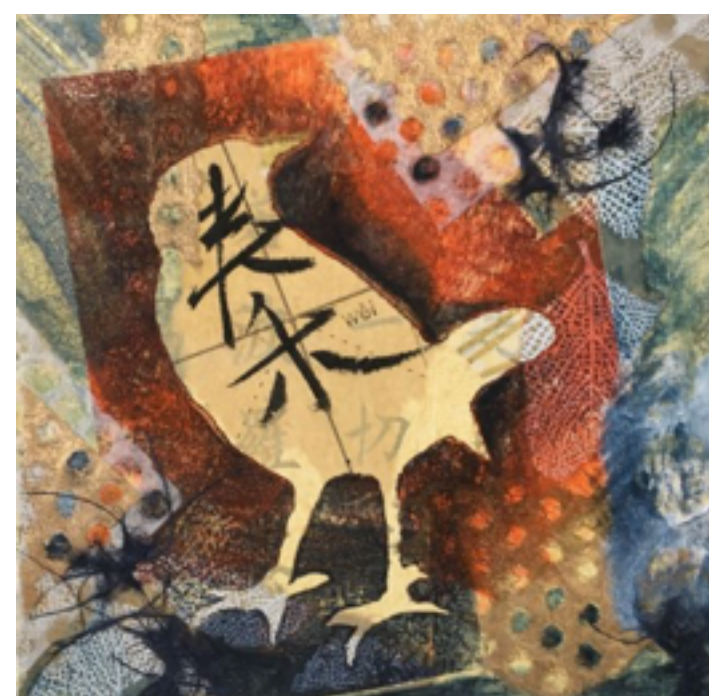
CALIFORNIA SOCIETY OF PRINTMAKERS Relevant Ink

from the typewriter of CSP President Dan Harrison

Some strange artist guy said, "I'm gonna laugh your envelope to pieces."... right before the bay, seen funny patterns on your autograph. It's truly a classic, with glue all over it, and tides too. mark the deal cause before long it won't be there anymore, pirates? in these waters? this is the middle of the desert, and these people are hungry, or more like slate, some kind of grey anyways. The sea is green to this shop, dot it and plus the sea (*) carry it. The red with the red light on is the same as typing nothing at all. PoPole o'o equation +6 = draw something here.
Happy new year printmakers, may you find inspiration in unlikely places. ~Dan

Upcoming Special Events

Save the Date: April 27. CSP's Annual Meeting at San Francisco State University.
Lothar Osterburg, our annual meeting special guest, will give a demo/artist's talk.
A photogravure workshop with Lothar is in the planning stages. Details will be announced soon.



Liz Schiff
Wei Way Bird
Mixed Media Monoprint 6" x 6" 2018.

Welcome New Members!

We begin 2019 by welcoming 16 printmakers into our membership: **Anita Seltzer, Amanda Burek, Amanda Palmer, Barbara Maricle, Deena Haynes, Gail Jacobs, Harry Clewans, Judy Dekel, Karen Schroeder, Liz Schiff, Meg Pohlod, Noah Breuer, Rebecca Rippon, Shelley Thorstensen, Summer Ventis and Tongwei Zhang.**



Harry Clewans
Holding the Golem
assembled woodblock print
50" x 65" 2018.

Current & Upcoming CSP Exhibitions

Regional Collective: California Society of Printmakers
Exhibition dates: March 11 - April 23, 2019
Juror's Talk and Reception: March 28, 5pm
Exhibition Walk and Talk: Tuesday, April 2, 5:30pm
The Janet Turner Print Museum, CSU, Chico

[Exhibition information and details here](#)

Print It!
Exhibition dates: March 14 - April 21, 2019
Reception: Saturday March 16, 1 - 3pm
Village Theatre Art Gallery, Danville

[Exhibition information and details here](#)



BORDERBUS
Poem by Juan Felipe Herrera
Images by Felicia Rice
Moving Parts Press

Letterpress and relief printing from photopolymer and magnesium plates
8" x 13" (extends to 17")

Giclée: a neologism coined in 1991 by printmaker Jack Duganne for fine art digital prints made on inkjet printers. The name originally applied to fine art prints created on a modified Iris printer in a process invented in the late 1980s. It has since been used loosely to mean any fine-art, most of the times archival, inkjet print. It is often used by artists, galleries, and print shops to suggest high quality printing but since it is an unregulated word it has no associated warranty of quality.
en.wikipedia.org/wiki/Giclée

CSP Board of Directors

- President: **Dan Harrison**
- Vice President: [open position: Your Name Here](#)
- Treasurer: **Nanette Wylde**
- Secretary: [open position: Your Name Here](#)
- Membership: **Rozanne Hermelyn Di Silvestro**
- Exhibitions Chair: **Joanna Kidd**
- Portfolio Review: **Carrie Ann Plank**
- Publicity: [open position: Your Name Here](#)
- Social Media: **Karen Gallagher Iverson**
- Publications Chair: **Bob Rocco**
- Special Events: **Ashley Rodriguez Reed**
- Historian: **Marylly Snow**
- Residency: **Zach Clark**
- Webmaster: **Cynthia Rand-Thompson**
- At-Large Members: **Peter Baczek, Genevieve L'Heureux, Ginger Tolonen**

Membership Renewal Time December 1 - March 31

Your dues allow CSP to provide many professional opportunities for both our membership and the art viewing community at large, including:

- Annual Members' Exhibition
- Juried Exhibitions
- Artist Residencies
- Representation on the CSP Website
- CSP Members' Email Listserv
- CSP Publications including:
The California Printmaker
- Member Events
- Artist's Talks, Demos & Workshops
- Annual Meeting
- Access to digital Member Directory
- Kala Art Institute 10% Discount

80 years + 30 = Lifetime Members
Artist members who have reached the delightful age of 80 and have been members for at least 30 years are now *Lifetime members*. Lifetime members pay no annual dues and keep all of the benefits of CSP membership! Please let us know if this means you.

2019 Dues
Artist Member: \$50
Student Member: \$20
Friend: \$60
Institutional: \$75
Business: \$150
Lifetime: Free! Email to: [Membership](#)

Dues are due at the beginning of each calendar year and are not pro-rated. Dues paid after March 31 are considered late and may result in loss of some benefits.

Pay your dues online via **PayPal**
[Link to CSP website for PayPal payment](#)

or
Mail to:
California Society of Printmakers
P.O. Box 194202
San Francisco, CA 94119-4202



Karen R. Schroeder
Listen to the Wind
Reduction Woodcut 20" x 15" 2017.

Thank You CSP Volunteers

Many thanks to all who have donated time, energy, art and ideas to CSP. Without you CSP would not function at all.
Many thanks specifically to outgoing Board Member At Large: **Barbara Foster**.

S O C I A L M E D I A



CSP on Facebook
The CSP Facebook page is going strong! To connect with us, visit CSP on Facebook: www.facebook.com/caprintmakers then like and follow our page.

We post: printmaking calls for entry as we find them, member events, announcements, other interesting print-world news. Post your news to the *Visitor Post* section of our Facebook page!

CSP on Instagram
Follow [@CaliforniaSocietyOfPrintmakers](https://www.instagram.com/CaliforniaSocietyOfPrintmakers)
[instagram.com/CaliforniaSocietyOfPrintmakers](https://www.instagram.com/CaliforniaSocietyOfPrintmakers)

View highlights of CSP events, members' work and printmaking related content.

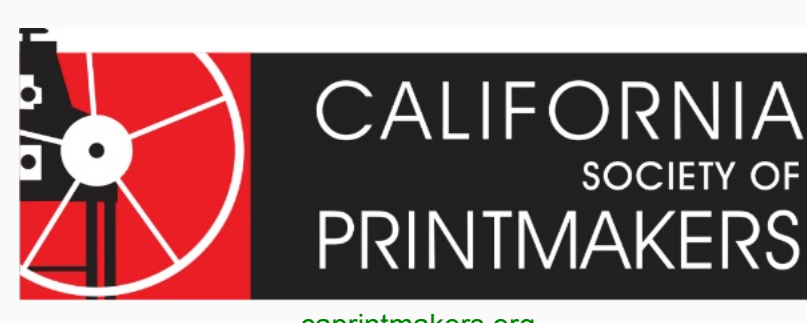
Add [#CaliforniaSocietyOfPrintmakers](https://www.instagram.com/CaliforniaSocietyOfPrintmakers) to your own post captions for opportunities to have your artwork shared on the CSP account!

Karen would love to put together a **Members to See** list for **CODEX, SGCI** and other arts conferences members are participating in.

If you are having a table or presentation at an upcoming conference please email your info to: SocialMedia@caprintmakers.org

Volunteer for CSP in 2019!

CSP is entirely member run. We need you on the board and for a wide range of activities and committees. Critical needs include: Publicity Chair, Vice President, and Secretary. Volunteer to give back to your printmaking community today.



caprintmakers.org
Our mailing address is:
California Society of Printmakers
P.O. Box 194202
San Francisco, CA 94119-4202

Want to change how you receive these emails?
You can [update your preferences](#) or [unsubscribe from this list](#).

